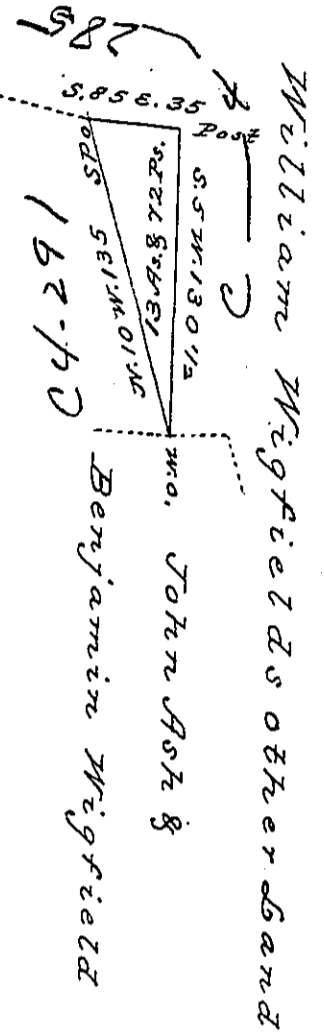


Anna Ash



Situate in Southampton Township Bedford County  
 containing 13 acres and 72 perches and allowance  
 of six per cent *ec.* Surveyed for William Wigfield  
 the 10<sup>th</sup> day of May 1836 on Warrant dated the  
 28<sup>th</sup> day of April 1836

To John Taylor Esqr S. G. } Robert Stuart D. S

IN TESTIMONY that the above is a copy of the original remaining on file in the  
 Department of Internal Affairs of Pennsylvania, made con-  
 formably to an Act of Assembly approved the 16th day of  
 February, 1833, I have hereunto set my Hand and caused  
 the Seal of said Department to be affixed at Harrisburg, this

Lusk day of October 1896

James W. Latta  
 Secretary of Internal Affairs.